

Continuing Project

CAFSIMP

CAFS Interactive Mapping (& Collaboration) Platform

Okan Pala, Department of Computer Science
North Carolina State University



Justification

- CAFS' need for a collaborative environment where partner institutions can
 - Visualize, share and query geospatial data on an interactive map
 - Have full control of their data in the repository:
 - Update existing datasets when necessary
 - Upload new datasets to share with others



Objectives

Create a user-friendly internet mapping platform (CASF IMP) and work initially with three CAFS sites to incorporate the layers of interest to the platform.

- Interactive online platform where users can
 - Visualize geospatial data
 - Download/share geospatial data
 - Export or print maps of specific areas of choice
- Geospatial data repository where users can
 - Update the geospatial datasets they own
 - Upload new data layers
 - View other user's data layers
 - Have fine-tuned control over their own data sharing level




Hypotheses

With multiple CAFS collaborating institutions, an interactive mapping site along with a collaboration platform with detailed sharing control can be used to increase research practice efficacy through increased communication and collaboration.



Methods

- Collaborate with three CAFS sites to build the dataset repository and web mapping application
- The project team will follow below phases to complete the project:
 - Discovery Phase 
 - Implementation Phase
 - Evaluation Phase
 - Training/Transfer Phase



Discovery Phase

- Collaboration through online meetings
- The project staff identifies and meets the site contacts to discuss
 - Existing data layers,
 - Needed updates on the data layers (numbers, size, update frequency, etc.)
 - Level of sharing and control required for specific groups of data layers
 - Plans for additional data layers and functionality requirements
 - Training needs and necessary access controls regarding the collaboration environment



Implementation Phase

- The project team processes (geometric correction and tiling) and loads the data to servers at NC State.
- Data layers are linked to AGOL site and shared with collaborators
 - Shared Update Groups
 - Fine tuned level of sharing.
- The data layers are used as a part of the internet mapping platform (WebApp).
- Pre-set communication tools will be used to create a procedure for new data to be used as a part of the WebApp.
- Through proper training, this can be handled by the site staff in the future



Evaluation/Transfer Phase

- Training will be provided to individual institutions to make sure they can:
- Upload their own data layers
- Update new data layers
- Follow a pre-set process to communicate the need for a specific layer to be placed on the WebApp



Deliverables

CAFS Interactive Mapping Platform (CAFSIMP) is the main deliverable along with the service we are providing to coordinate the member organizations for easy collaboration. Through the platform and accompanying online sharing system, members will have easy and transparent access to data visualization, storage, sharing and update capabilities.

- AGOL Groups will be created with fine-tuned access and sharing control
- Site coordinators and staff will be added with proper privileges.
- The WebApp (CASFIMP) will be completed with required functionality and kept online for a year after the project completion with limited support.
- Documentation and training on the use of the interactive mapping platform and collaborative data repository will be provided

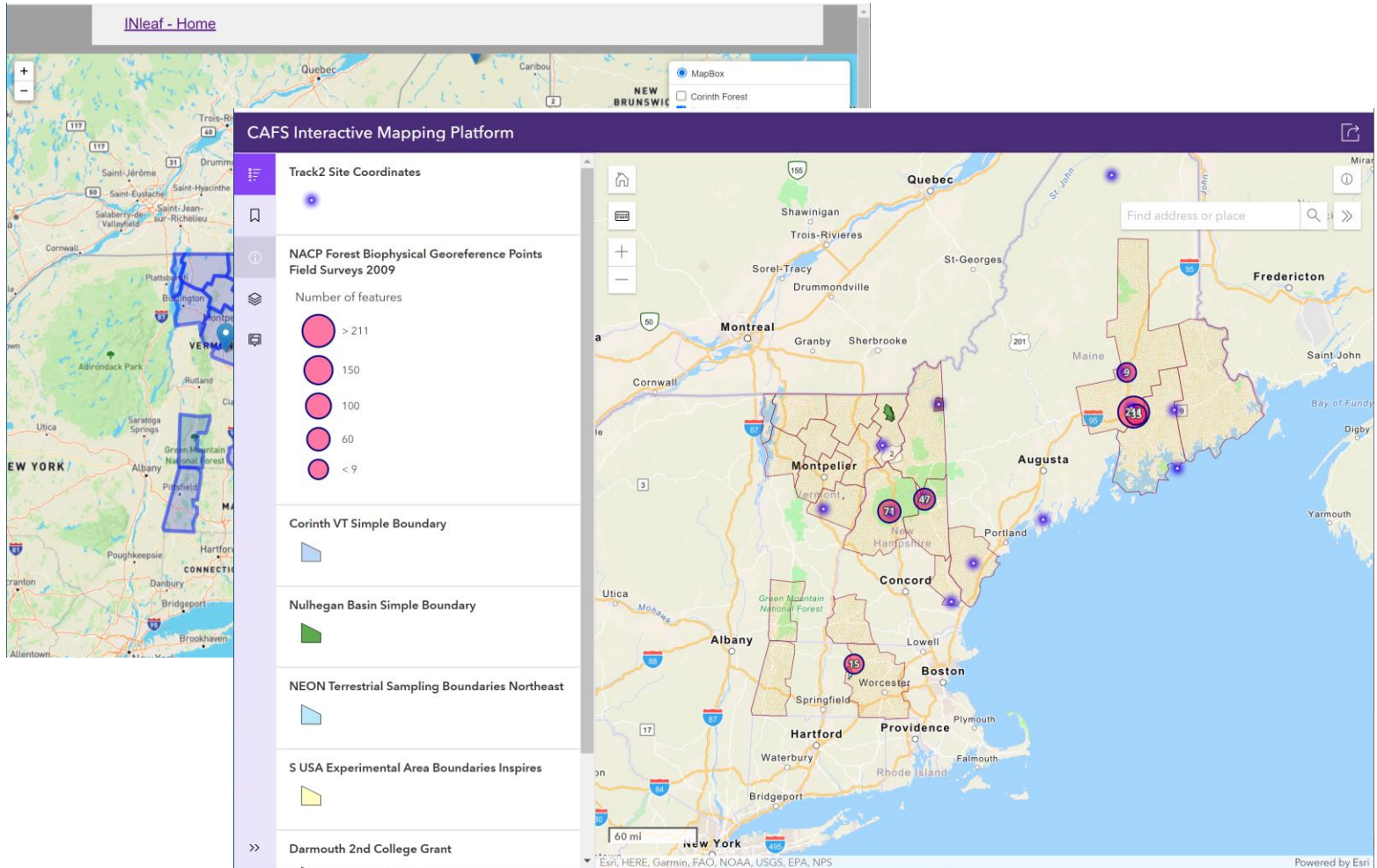


Company Benefits

The interactive mapping platform (CAFSIMP) can be used to communicate and visualize the site data with ease, increase collaboration among CAFS sites and provide ease for data finding, and updating. This in turn will result in time and cost savings for member organizations.



Inleaf vs CAFSIMP



Questions

Okan Pala, Department of Computer Science
North Carolina State University



Email: opala@ncsu.edu

