



Munsungan Endowment

[crsf.umaine.edu/outreach/
munsungan-series/](http://crsf.umaine.edu/outreach/munsungan-series/)



The mission of the **Center for Research on Sustainable Forests** is to coordinate, conduct, and communicate interdisciplinary scientific research to provide forestland and natural resource expertise and data relevant to the region's diverse stakeholders.

The University of Maine is an EEO/AA employer and does not discriminate on the grounds of race, color, religion, sex, sexual orientation, transgender status, gender expression, national origin, citizenship status, age, disability, genetic information or veteran's status in employment, education, and all other programs and activities. The following person has been designated to handle inquiries regarding non-discrimination policies: Director of Equal Opportunity, 101 North Stevens Hall, University of Maine, Orono, ME 04469-5754, 207.581.1226, TTY 711 (Maine Relay System).

The **Munsungan Fund** at the University of Maine began in 1992 with the generous support and keen insight from a select group of UMaine alumni. The fund was created to support outreach and education projects that educate the public about forest resources in Maine.

The First Munsungan Conference (held in 1992) was named after Munsungan Lake in northern Piscataquis County, north of Baxter State Park and near Reed Mountain. Brad Wellman, who helped organize and financially support the conference, said Munsungan Lake is representative of the resources at stake in the future management of Maine's forests: a nexus among industrial forestry, recreational use, and forest conservation, and carries forward the Native American historical background to Maine's forest base.



The 1990s Munsungan Conference Series focused on land, timber, and recreation for Maine's future forest; competitive advantages and opportunities in Maine's secondary wood processing industries; and forest health issues. One of the most important functions of this series was to increase awareness and appreciation of the complexity of forces, both natural and societal, within which the broad practice of forestry operates.

The Munsungan Endowment has supported outreach conducted by Center for Research on Sustainable Forests (CRSF) since 2006. In 2007, the CRSF partnered with the Cooperative Forestry Research Unit (CFRU) to produce the Munsungan Series round table: Deer Wintering Areas in Maine. This event for resource managers, scientists, and policymakers was designed to foster discussion about how to best co-manage forests for wood products and quality habitat that allows white-tailed deer to survive Maine's harsh winters.

Another outcome of Munsungan support was the creation of Forests for Maine's Future, a partnership between the CRSF, Maine TREE, Maine Woodland Owners, and the Maine Forest Service to educate people about the contributions that Maine's forestland make to our economy, our environment, and our quality of life.



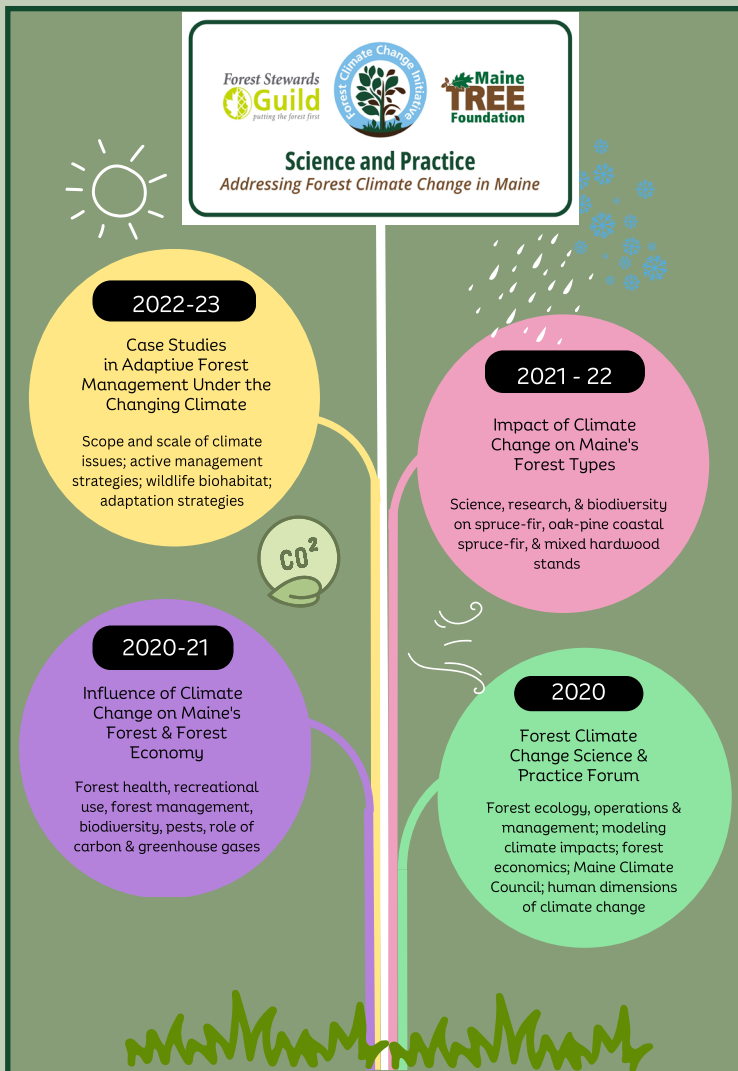
Addressing Forest Climate Change in Maine Webinar Series

crsf.umaine.edu/fcci-webinars



In recent years, the Munsungan Funds have been put to use by the CRSF to expand their virtual presence and outreach efforts. The funds were vital to the development of the NorthEast Forest Information Source (NEFIS, nefismembers.org), an online, open-source web portal that is home to an extensive collection of forest-related papers, data, reports, proceedings, theses, and unpublished materials such as maps and posters for forest managers, researchers, and scientists. The funds also contribute to forest research tools maintained by CRSF: Maine Forest Spatial Tool (mfst.acg.maine.edu) and the Maine Forest Dashboard (maineforestdashboard.com).

Prior to the pandemic shutdown, the Munsungan Fund generously supported the Forest Climate Change Science and Practice Forum hosted by CRSF's Forest Climate Change Initiative (FCCI) in partnership with the Forest Stewards Guild (FSG). Attended in-person by nearly 60 stakeholders, the forum provided opportunities for scientist-manager discussions about current forest research and stakeholder needs, Maine's forest climate adaptation community of practice, and insight and contributions to the work of the newly formed Maine Climate Council.



In 2020, based on the success of the Forest Climate Change Science and Practice Forum and in response to the pandemic circumstances, CRSF teamed with the Forest Stewards Guild and Maine TREE to develop a monthly all-virtual webinar series, Science and Practice: Addressing Forest Climate Change in Maine. Each webinar features a new panel of researchers, scientists, and stakeholders tackling issues of climate change and how it is influencing Maine's forests and forest economy. In 2021, CRSF expanded the series to incorporate half day field tours to showcase climate impacts and management at each site.

Webinar Attendees, 2020-22: 1,108
Field Tour Attendees, 2021-23: 200



Center for Research on Sustainable Forests
5755 Nutting Hall, Room 263
Orono, ME 04469-5755
crsf.umaine.edu / 207.581.3794