

Progress Report

CAFSIMP

CAFS Interactive Mapping (& Collaboration) Platform

Okan Pala, PhD

Department of Computer Science
North Carolina State University



Adem Kurtipek

Center for Geospatial Analytics
North Carolina State University



Project Overview

Objective(s): Create a proof-of-concept internet mapping & collaboration platform (CASF IMP) and work initially with three CAFS sites to incorporate the layers of interest to the platform.

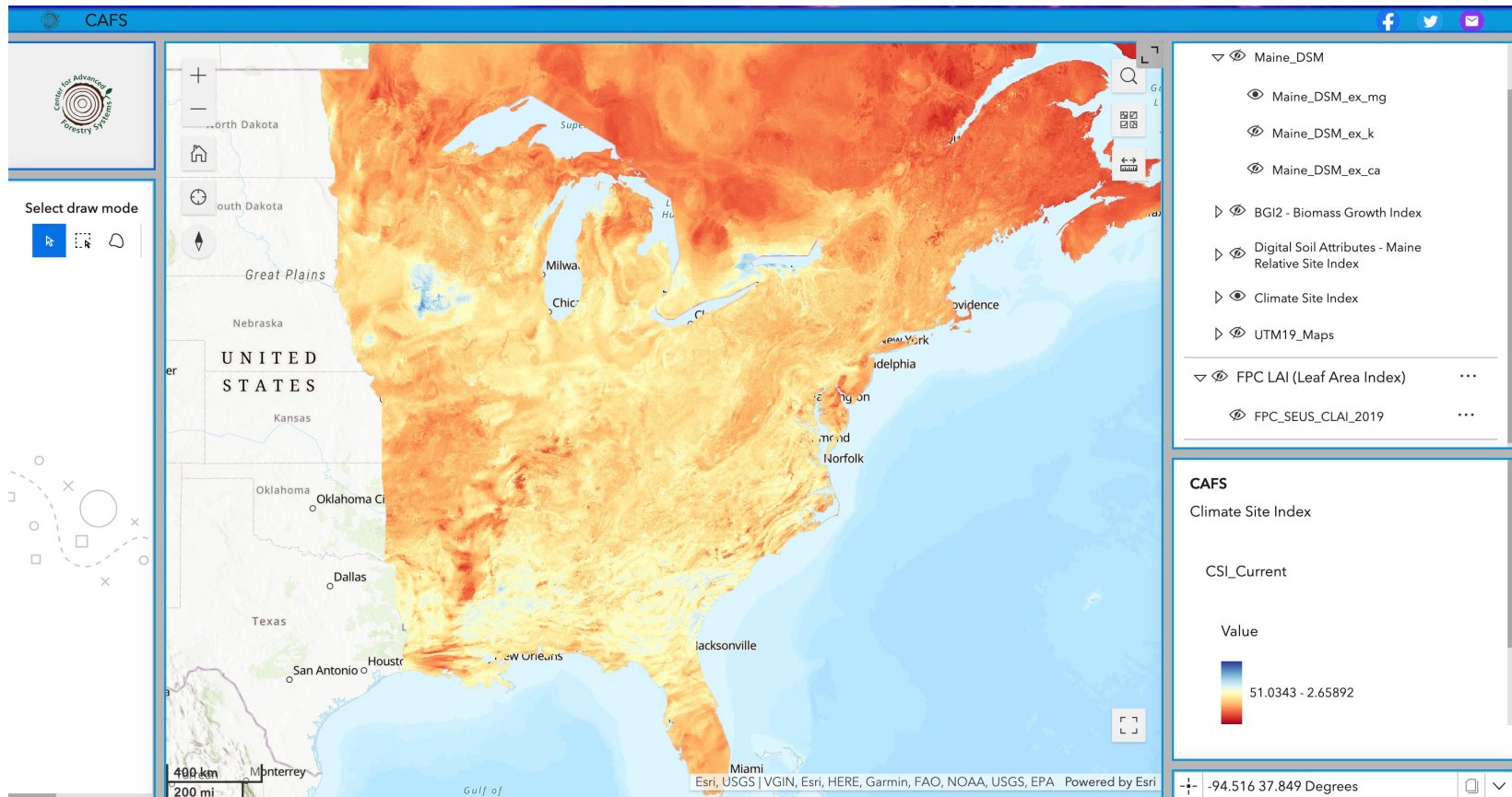
- Interactive mapping platform where users can
 - Visualize geospatial data
 - Download/share geospatial data
 - Export or print maps of specific areas of choice
- Geospatial data repository where users can
 - Update the geospatial datasets they own
 - Upload new data layers
 - View other user's data layers
- Have fine-tuned control over their own data sharing level



Current Progress

Interactive mapping platform Option 1 - Experience Builder

Newer Technology – Less Pre-developed Tools



Current Progress

Progress:

- Discovery Phase - Complete
- Implementation Phase - Complete
- Evaluation Phase - Ongoing
- Training/Transfer Phase - Ongoing



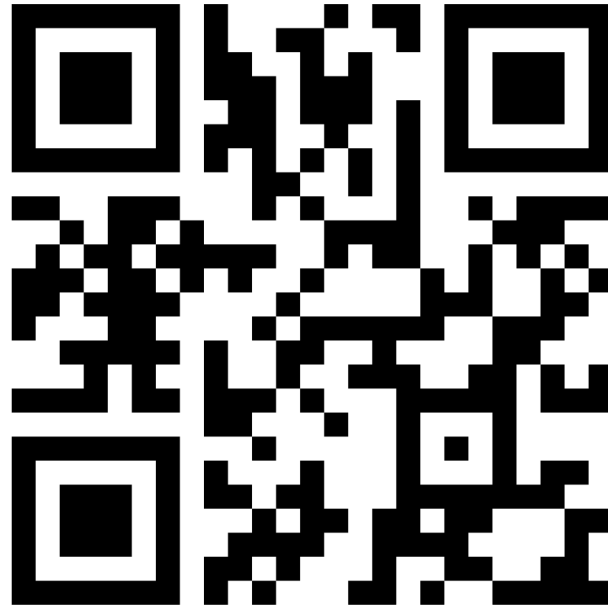
Getting feedback on Technology Options:

- Experience Builder
- WebApp Builder
- Portal Frontend



Current Progress

WEBApp Link (Experience Builder)



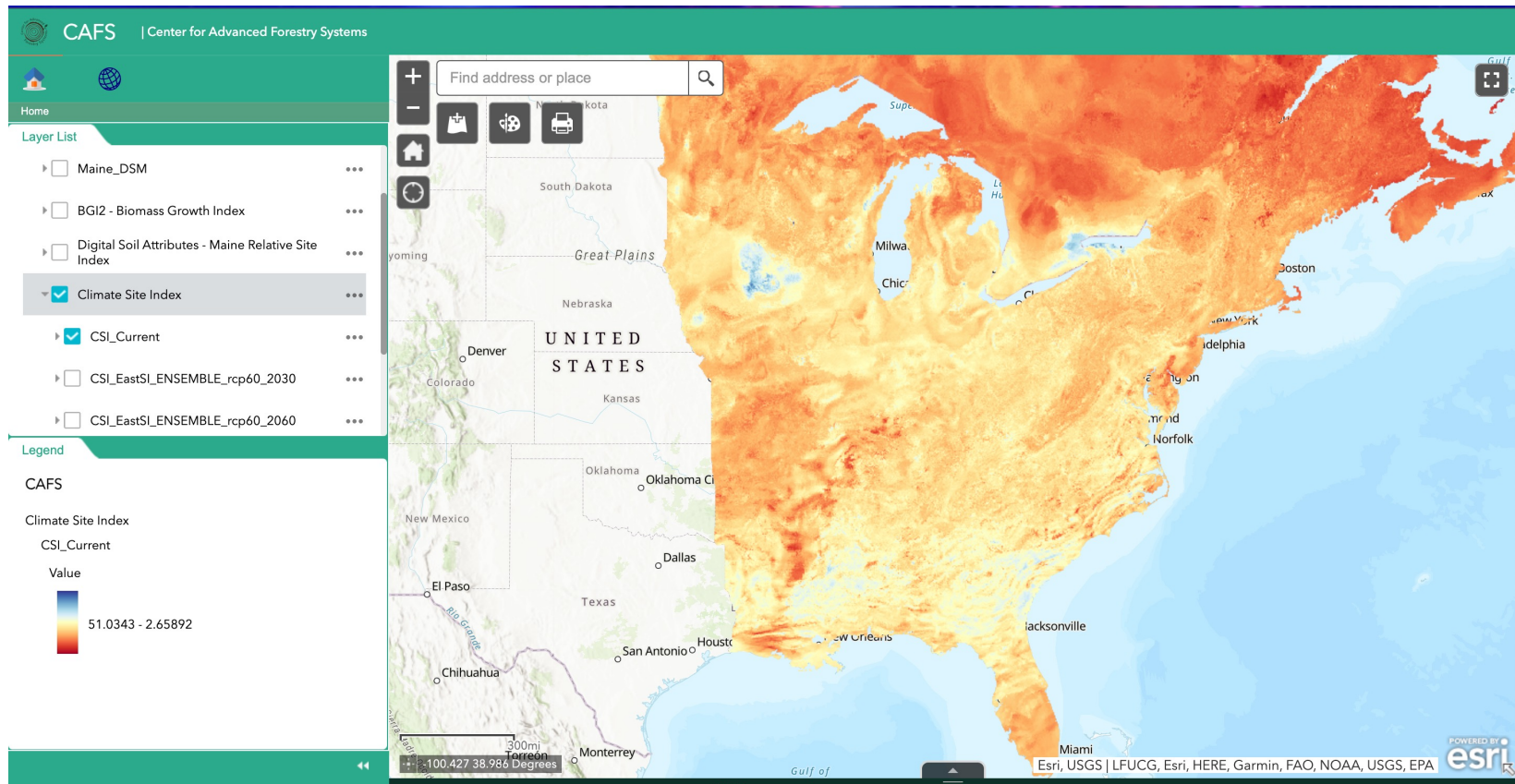
go.ncsu.edu/CAFS_WEBApp1



Current Progress

Interactive mapping platform Option 2 - WebApp Builder

Older Technology - More Pre-developed Tools



Current Progress

WEBApp Link (WebApp Builder)



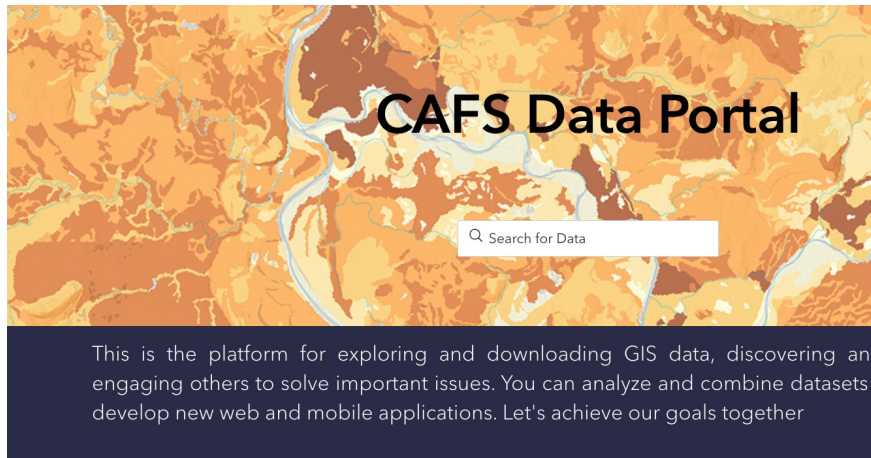
go.ncsu.edu/CAFS_WEBApp2



Current Progress

Portal Interface

Single Interface for info and latest data layers



Explore your data



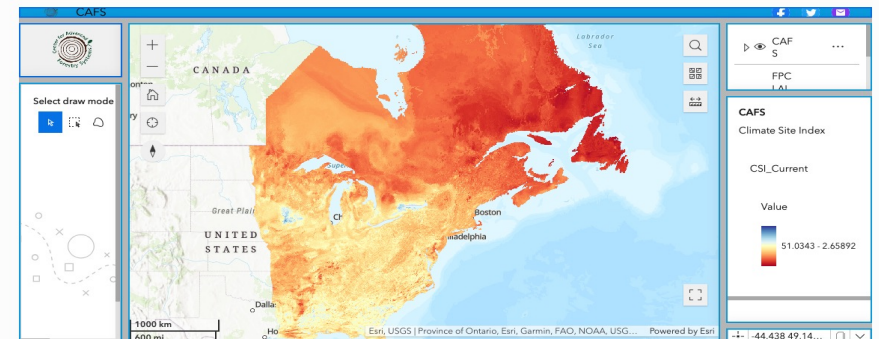
Climate Site Index (CSI)



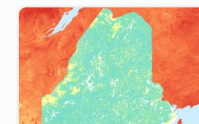
Biomass Growth Index (BGI2)



[/cafs-data-portal/people/okanpala/notifications](https://cafs-data-portal/people/okanpala/notifications)



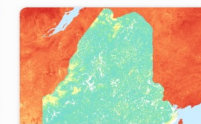
Latest updates



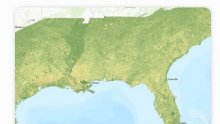
CAFS_WebApp (WAB)
CAFS Web App



CAFS WebApp



CAFS_WebMap
UTM19 Maps, Maine DMS, DSM, Maine, CSI, Climate Site Index, BGI, BGI2, Biomass...



SEUS_CLAI_2019
FPC, SEUS, LAI, Leaf Area Index



FPC_SEUS_CLAI_2019
FPC, CLAI, SEUS, FPC CLAI SEUS 2019, Leaf Area Index



CAFS 2022 Annual Progress Report
CAFS 2022 Annual Progress Report



CAFS 2020 Annual Report
CAFS 2020 Annual Report



CAFS 2021 Annual Progress Report
CAFS 2021 Annual Progress Report

CAFS 2023 Fall IAB Meeting



Current Progress

Portal Link



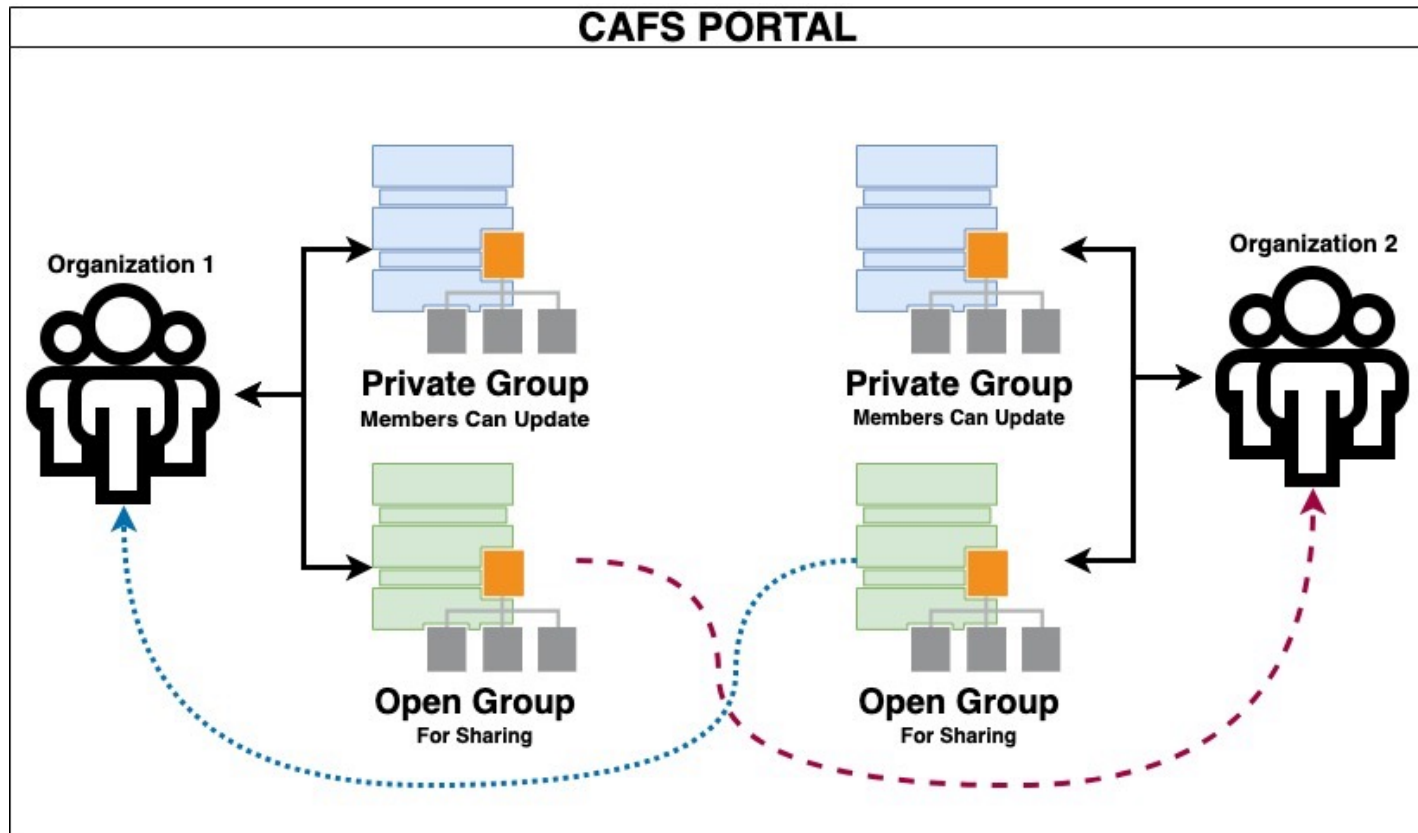
go.ncsu.edu/CAFS_Portal



Current Progress

Portal Data Sharing Protocol

Open Group's Are For Sharing - Private Groups are for Collaboration/Testing within your Organization



- Private Entities with Closed Portals – Collaborate Through Secure Shared Spaces



Future Plans

- Complete Evaluation & Training/Transfer Phases
- Finalize the Technology Selection: Experience Builder vs WebApp Builder
- Implement Secure Folder Sharing from the Portal with an Industry Partner
- Implement New Features on the WebApp
 - Raster analysis
 - Export raster data directly from the Webapp
 - More functionality based on the need
- Secure More Funding



Questions

Okan Pala, Department of Computer Science
North Carolina State University



Email: opala@ncsu.edu

